

Genie XMS Solution



* product specifications are subject to change without notice
* Models vary in different countries. Please visit EverFocus regional websites for detailed ordering

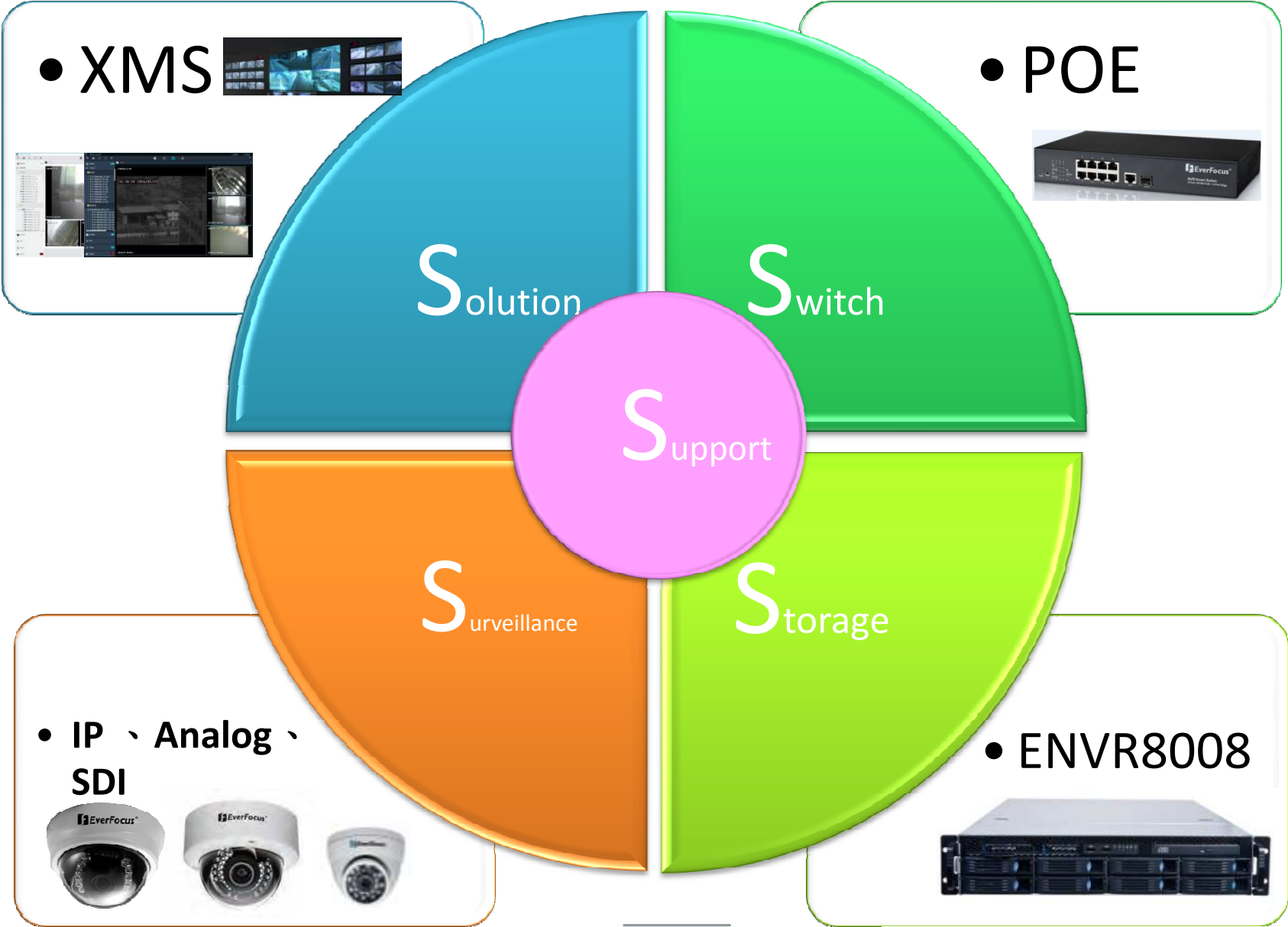
Introduction



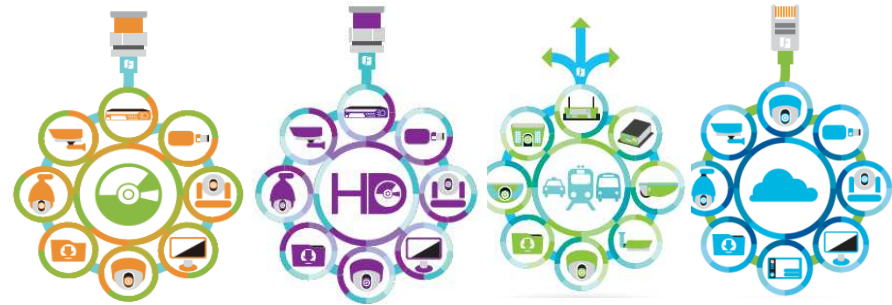
The **Genie-XMS** is designed with an open and flexible architecture that is able to offer large scale integration scalability. This surveillance management system is able to connect any IP-based devices or systems including IP cameras, access control, LPR and POS systems. Web pages or messages can also be displayed on the live view screen. The live view layout can be arranged in any form you desired.



S Level One-stop service solution

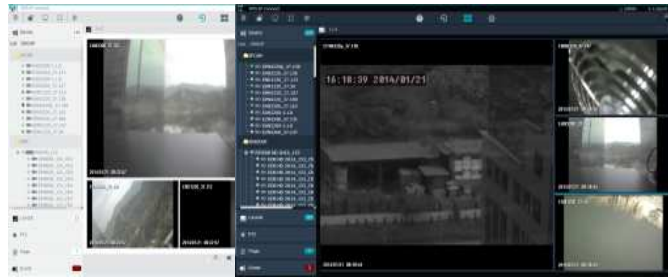


Selling point



- **All in One Solution**
 - CMS 、 Analog Solution 、 IP Solution 、 SDI solution
 - A complete solution : Switch(POE) 、 XMS (Software) 、 Storage 、 Surveillance
- **Support**
 - A thorough training solution helps channel partners to grow and acquire various technologies.
- **Best Compatibility**
 - The scalability : S Level can fulfill all the setup requirements from small to large-scale projects.
 - Scalability and integration capability can avoid idle assets or more investment.
- **S Level One-stop service solution**
 - 24/7 support for any problems
 - Highly values the customer relationship and service with our system installers’
 - S Level Integration Solution can greatly reduce system installers’ workloads
 - S Level will help system installers’ to maximize and seize more sales Opportunities

Genie XMS NVR



WEB UI



Client Control



Genie XMS ENVR8008

Live Connection
(Unlimited)

Recording Connection
(Max 64 CH IP Devices)





Genie XMS NVR Features



ENVR8008

High Quality Recording

- Free 32CH @1080p, H.264 (Up to 5 megapixel resolution per channel)
- Max 64 CH 1080p IP Camera

High Performance

- 250Mbps Recording Performance
- Highest Data Protection
- 8 Bay Hot-Swappable Hard Disk

RAID 0, 1, 5,6,10

- For full data protection

Free From Remote Live View

- Supports Multi Browser (IE 9, 10,11, Chrome)
- Supports MobileFocus (iOS and Android)
- Supports 3rd Devices Live Connection



Genie XMS ENVR8008 H/W SPEC

| | |
|-----------------------|--|
| System Processor | Intel® Core I5-4570TE (Haswell) |
| System Memory | DDR3 16GB |
| Chipset | Intel® C226 chipset |
| Operating System | Embedded Linux |
| Storage | 4TB per drive (Max 8 drives) |
| I/O Interface | 1 x VGA Port ;1 x DVI Port ; 2 x Display Port |
| | 2 x RJ-45 |
| | 2 x USB 2.0 |
| | 2 x USB 3.0 |
| | 2 x Audio (Mic-in & Line-out) |
| RAID | RAID 0, 1, 5, 10 |
| Electrical | •Input voltage: 100V~240V, 3.5A |
| | •Power Supply: 500W |
| Operating Environment | •Humidity: 5% to 80% (non-condensing) |
| LED Indicator | •Temperature: 5° to 40°C |
| | 1x Power Status ;1x HDD Activity ;2x LAN Activity |
| Dimensions | 1x Power on/off Switch ;1x Reset Switch ;2x USB 2.0 ports |
| | 660mm(D) x 430mm (W) x 88mm(H) ; 26" (D) x 16.9 (W) x 3.5" (H) |
| Weight | 8.8 Kg (w/o Hard Disk) |
| Certificate | CE / FCC |



Genie XMS ENVR8008 S/W SPEC

| Model | | D Version |
|---|------------|--|
| Part Number | Server | ENVR8008 |
| | IP License | 1 ~ 64 CH |
| Max IP License(through upgrade) | | 64 CH @ 1080p |
| Free License (included in server) | | 32 channels from EF-IP devices |
| Maximum License | | 32 channels from EF-IP devices or third-party IP devices |
| Server O/S | | Embedded Linux |
| Video Compression | | H.264, MJPEG (depends on IP camera) |
| Recording Performance | | 250 Mbps |
| RAID | | 0, 1, 5,6,10 |
| External Storage | | iSCSI or JBOD (TBD) |
| Supported Language (10 languages) | | English, Japanese, Traditional Chinese, Spanish, Deutsch, French, Russian, Portuguese (Brazil),Dutch, Simplified Chinese |
| LiveView spot-out (Local display) | | Local Display 16CH @ 720 x 480 (TBD) |
| *Max recording throughput (250 Mbps): Approx. 128ch 720 x 480 H.264 cameras at 30 fps without remote playback. | | |



Genie XMS ENVR8008 S/W SPEC

| | |
|-------------|---|
| Digital map | eMap snapshot / open street map |
| Alarm | Digital output (depends on IP camera) Alarm recording Pre and post alarm 1~300 sec Event, Motion, Connection lost, E-mail |
| Backup | Remote backup / i-SCSI backup |
| Management | three level: admin, manager, operator, features configurable |
| Network | PPPoE / TCP/IP / HTTP / SMTP / DDNS |
| DST | Daylight saving time by NTP server |
| PTZ control | EKB200 |

Genie XMS Solution

Solution



Public Space



Parking Lot



Casino



Lobby



Meeting Room



Entrance

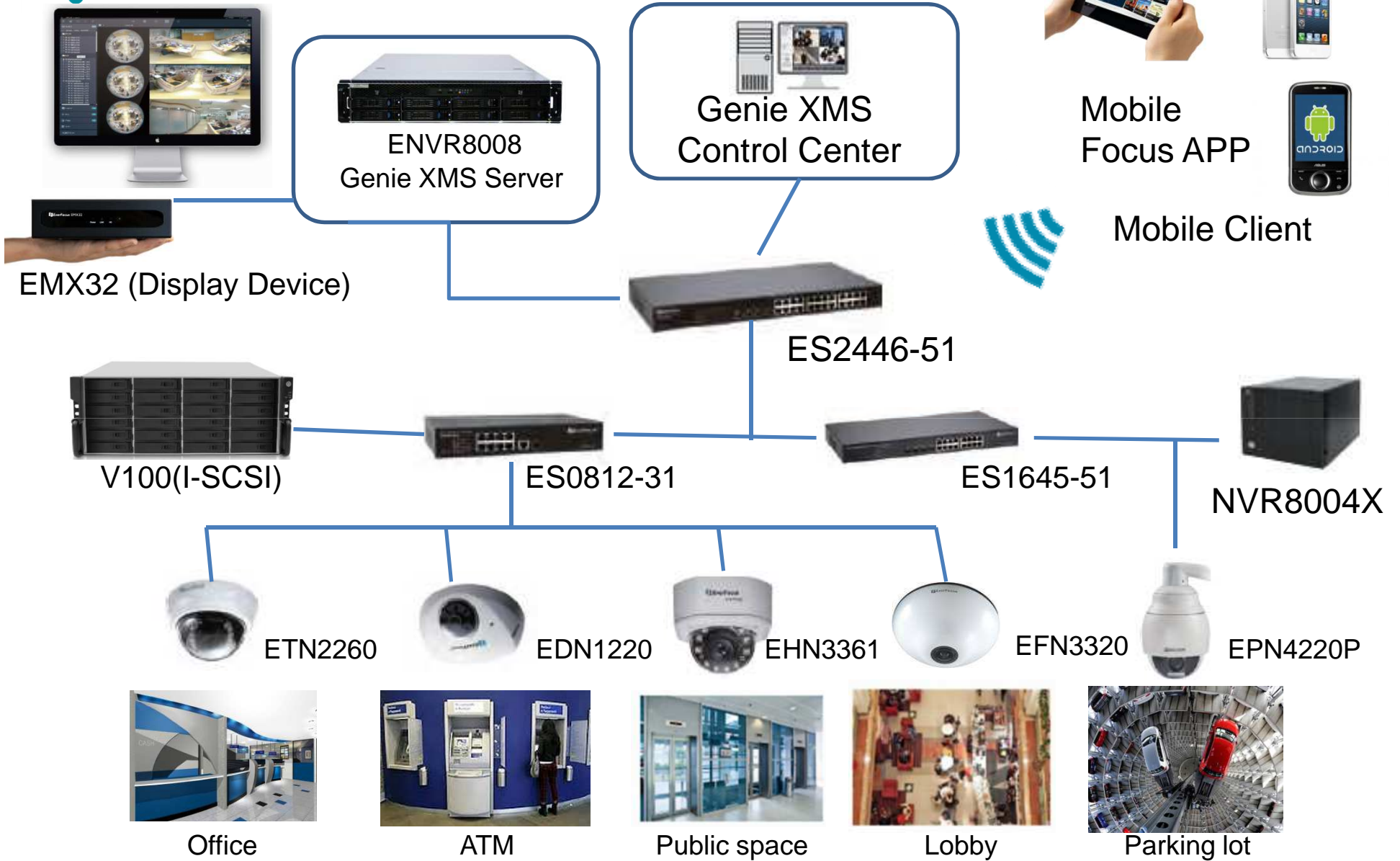
Genie XMS Solution

Bank Surveillance Solution

Connected,
As easy as...



Genie XMS Solution



Connected. As many as Everything.