

## How to upgrade C1080 Series Camera through DVR

### 1. Check F/W version of DVR and Camera.

- Camera : Over v1.2.x (System → Version info. v1.0.x doesn't support remote upgrade)
- DVR : Over v3.9.30
- Control Center : Over v2.26.x

### 2. Connect Com2/Com3(RS-485) port of DVR with RS-485 of C1080 camera.

- GND need to be connected as well as + , - when connect RS-485.
- Use twist pair cable in case the distance between DVR and Camera is far(over 5m).
- Set (Termination) On , in case the distance between DVR and Camera is far (over 5m).

### 3. If the F/W of DVR is lower than v3.9.30, please update DVR F/W.

### 4. After upgrade DVR, Please set up Com2 or Com3 port and PTZ as follow.

Com 2 / Com 3		PTZ	
Device	PTZ	Enable	Check(√) Port Dependency : COM2/COM3 RS485 Address : 1~255
Connection	Interface : RS-485 Baudrate : 9600 / <b>57600</b> Data Bits : 8bits Stop Bits : 1bits Parity : None		
PTZ	<b>Device : C1080</b>		

#### <Note>

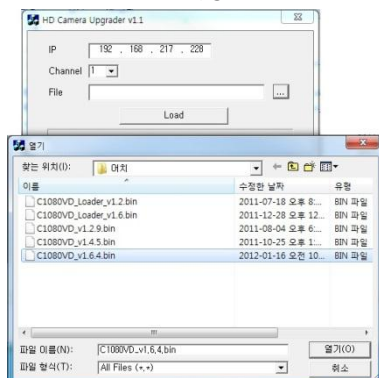
1) In case multi cameras in same Serial port will be upgrade, please assign different ID per each camera.

EX) C1080B x 3ea in same port → RS485 ID is No.1 camera : 1 , No.2 camera : 2 , No.3 camera : 3.

2) In case multi cameras are updated in same serial port, upgrade will halt when power of camera in same serial line reboot.

### 5. Please run "HD\_Camera\_Upgrader" and follow below steps.

- 1) Run the HD\_Cam\_Upgrade then select camera F/W to upgrade.



- 2) Enter IP address of DVR where to-be upgrade camera is connected then select channel and select upgrade file and click 'Load'

button.



#### <Note>

- 1) User doesn't need to enter port number even though connected DVR has specific port. Just enter IP address of DVR.
- 2) Select correct F/W per model. Otherwise camera might not show correct display.
  - C1080B : C1080B\_v1.xx.x.bin
  - C1080BM : C1080BM\_v1.xx.x.bin
  - C1080D Series(D,VD,D-IR,VD-IR) : C1080VD\_v1.xx.x.bin
  - C1080AF Series(D-AF,D-IR-AF,VD-AF,VD-IR-AF,BL-IR18-AF,BL-IR48-AF) : C1080AF\_v1.xx.x.bin
- 3) The upgrade time via Network will be various based on environment and Baudrate.
  - Baudrate 9600 : About 2min 20sec
  - Baudrate 57600 : About 1min 30sec

- 3) Once upgrade is done after click 'Load' button, it takes about 1min 20sec ~ 2min for upgrade.

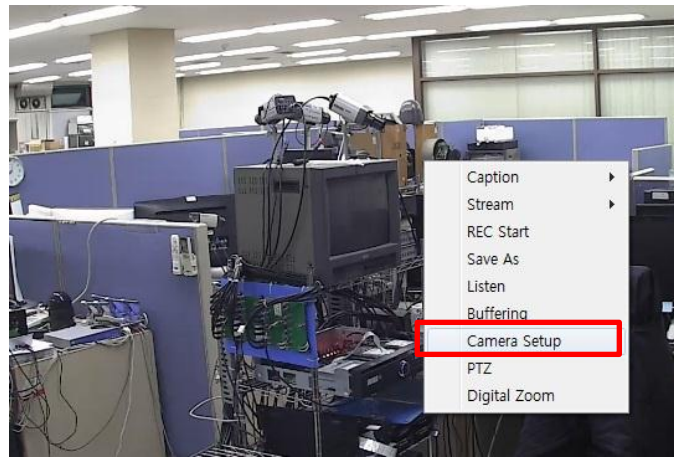
In this case, camera display looks white as if it is over exposed but please be noted that this is not a bug.

But in case the display keeps halted after 2 min, please click on Load button in HD\_Camera\_Upgrader one more time to proceed with upgrade.

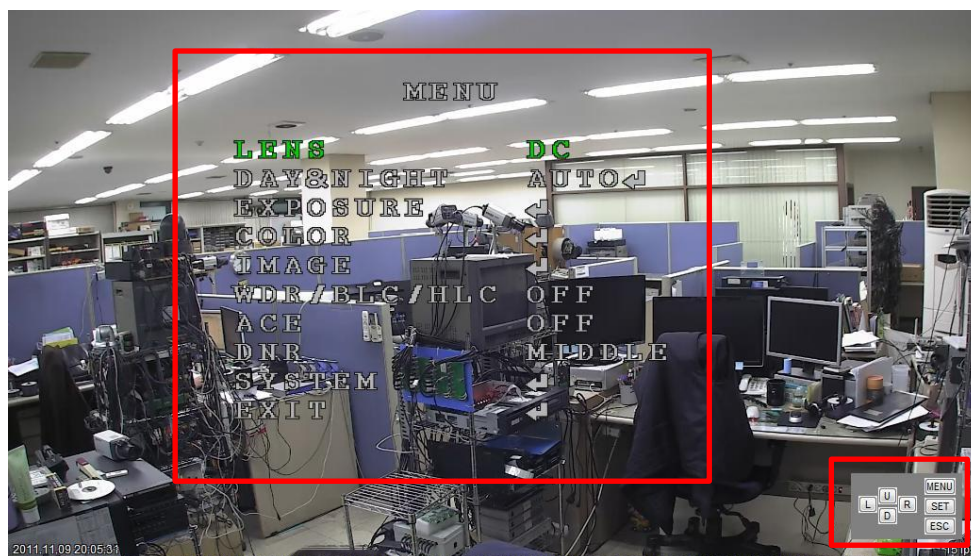


6. Once camera upgrade is done and image looks normal after finishing step 5, then select upgraded channel in single channel mode in Control Center Monitor.

Then click on right button of mouse to enter popup menu and go to "Camera Setup".



7. Camera OSD menu is activated when click Camera Setup menu and there will be control window at the right bottom side of the screen.



#### <Note>

- 1) The possible delay could be occurred during menu control based on network situation.
- 2) Make single channel in DVR then click PTZ button of DVR then it will be same as control in C.C (Control Center).
- 3) ESC button is not used.



**8. Please pay attention while F/W upgrade into the latest version and F/W upgrade with wrong F/W will make camera work abnormally. Please refer to below classified table to check F/W version.**





1) Directions for upgrade of camera

- + If the camera is upgraded with wrong F/W, camera will not be working normally.
- + C1080B/BM model can be upgraded with the latest F/W regardless of mechanical part and lens.
- + Please upgrade B type after checking lens.
- + Please be noted not to disconnect power and RS485 connection during upgrade
- + The image of camera will remain stop while it is being upgraded and it takes maximum 3 minutes to complete upgrade.
- + Please try upgrade one more time once the camera is not working normally after 9 minutes from the beginning of upgrade.
- + A type model without RS485(green, white) line in cable will not be supporting upgrade.

2) Upgrade classified table

- + By mechanical part = A type : OLD mechanical part, B type : NEW / by lens = a type : OLD, b type : NEW

Classification	A type	
By mechanical part		
F/W	<b>Non AF Series : C1080BM_v1.13.0</b> <b>AF Series : C1080AF_v1.13.0b</b>	

Classification	<b>B type</b>	
By mechanical part		
F/W	<b>Non AF Series : C1080VD_v1.14.0</b>	
Classification	<b>a type</b>	<b>b type</b>
By lens		
F/W	<b>AF Series C1080AF_v1.13.0a</b>	<b>Upgrade not required</b>