

ABFL-01

Air filtering battery 20-5-0.1 micron




Installation manual

DESCRIPTION

The air filtering battery **ABFL-01** is used together with the air barrier front window flange in order to keep clean the housing's front window, filtering the air from water and oil particles.

The battery is composed by three filters (20, 5 and 0,1 micron) in series, a pressure regulator and a pressure gauge. The water and the oil filtered are collected in 100 cc bowls. The 0.1 micron filter is made up by a microfiber coalescent cartridge which allows a high filtration efficiency of 99,99% on 0,1 µm particles. The regulator filter can keep stable the set pressure regardless of upstream variations. The air filtering battery can easily be installed due to its mounting bracket.

The filtering may be refilled with the microfiber cartridge suitable for the element.

	Prior to installation and operation, read carefully all instructions the in this manual and heed all warnings.
	Unpack this equipment and handle it carefully. If the package appears to be damaged, notify the shipper immediately.
	Use the original packaging to transport the unit. Disconnect power supply before moving it. In case of returning the equipment, the original packaging must be used.
	Use caution when lifting and assembling the unit. It is recommended that non-slip protective gloves be worn during installation. The unit could bear sharp edges.

TECHNICAL DATA

Dimensions:	250X280x100 mm
Weight:	1,5 kg
Max input pressure:	6 atm
Gauge pressure range:	from 0 to 6 atm
Filters:	20 micron, 5 micron and 0,1 micron
Input connector:	1/2" GAS
Output connector:	1/2" GAS (with 6 mm ext. diameter hose adaptor)
Temperature range:	from +5° to +50° C

MOUNTING INSTRUCTIONS

Place the filter in a suitable location and fix it to the wall using the wall fixing.

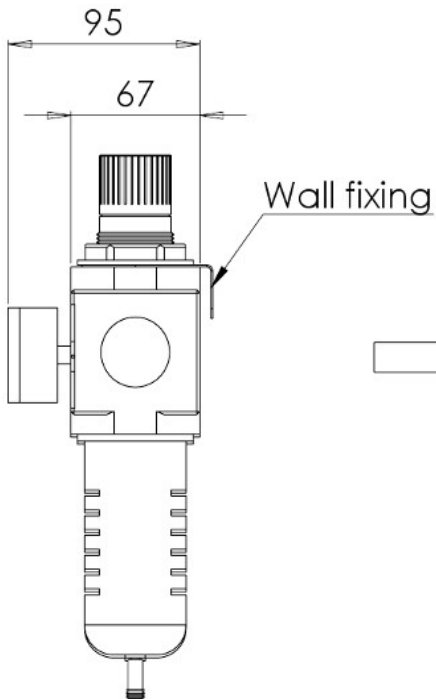
Connect the air tube to the filter inlet (as shown in figure) with a 1/2" GAS tube.

From the other side, connect the air outlet with an air tube which has to be connected with the front air flange of the camera housing.

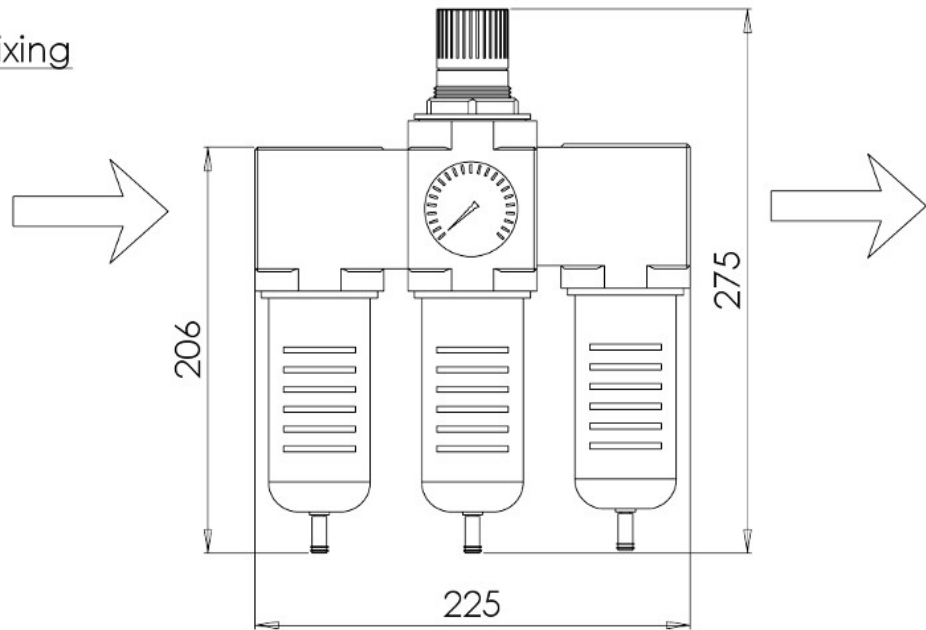
Pay attention to 6 atm maximum inlet pressure.

DIMENSIONS

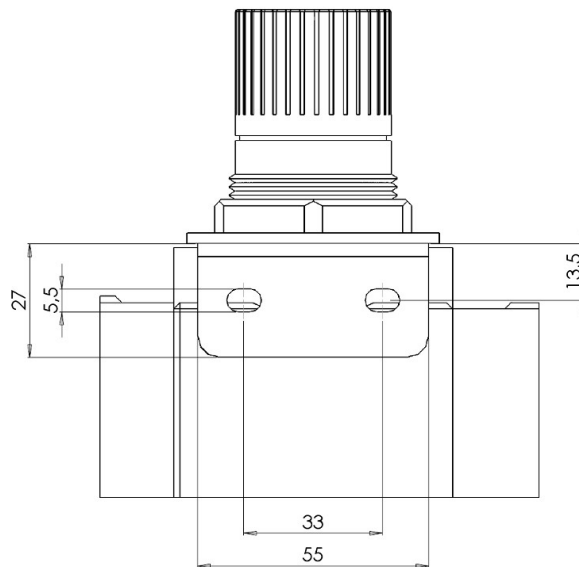
SIDE VIEW



FRONTAL VIEW



WALL FIXING



Dimensions in millimetres – Tolerances according QMS – Design and product specifications subject to change without notice

TECNOVIDEO

CCTV SYSTEMS AND ACCESSORIES



Website: www.GlobalCCTV.com.au eMail: Info@GlobalCCTV.com.au